

S Q U A R E

Active Single Speakers

SQ33-BS18/WS18



Description

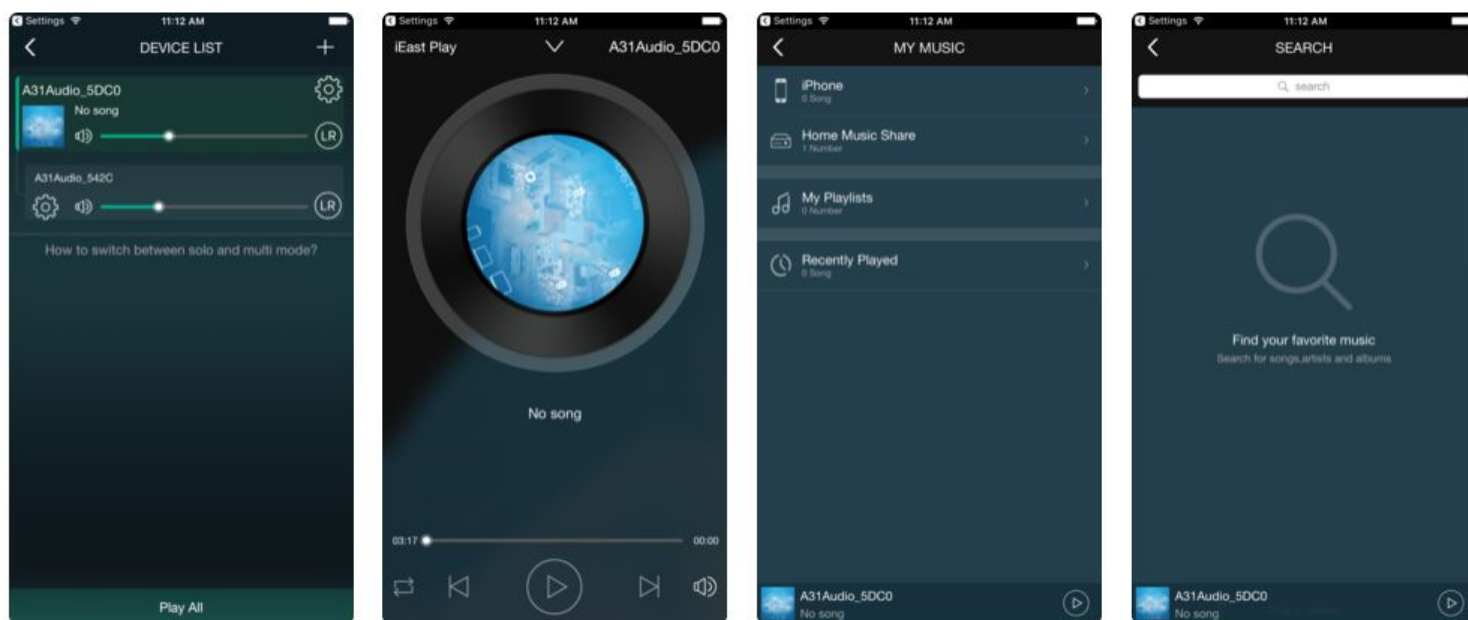
Great sound from powerful active single stereo speakers based on Bluetooth®
And furthermore (SQ33-WS18 only) Multiroom App, WiFi®, DLNA®, AirPlay® and Spotify Connect®

Item no.:	SQ33-BS18 (Active Bluetooth Speaker) SQ33-WS18 (Active Bluetooth and WiFi Speaker)
Cabinet:	Ecofriendly Paulownia wood
Size:	SQ33-BS18 (HxWxD) 330 x 330 x 180 mm SQ33-WS18 (HxWxD) 330 x 330 x 180 mm +/- 1 mm
Front:	Different standard fronts, or your own front design
Mounting:	Standing or on wall. Alone or as a part of a acoustic art wall
Wall bracket:	Comes with a simple wooden wall bracket We recommend to upgrade with our aluminium rail (SQ33-R1)
Damping material:	100% homogeneous, flexible and strong polyester fibers Ecofriendly, UV resistant and protected from mold and dust mites
Speaker:	Stereo 40W RMS at 8 Ohm Woofers 6,5" Coaxial Kevlar Cone Tweeter 2 x 1" Silk Dome Frequency range at 65Hz - 20KHz Sensitivity at 90dB Power 100~240VAC Bluetooth®
SQ33-WS18 only:	Compatible with different multiroom Apps We recommend "iEAST Play" for iOS® or Android® Bluetooth®, WiFi®, DLNA®, AirPlay® and Spotify Connect®
Optional features:	Recommended for hotels, offices and shops etc. Customized Bluetooth name Bluetooth PIN protected pairing Disabled Bluetooth auto reconnect Maximum master volume setup

Multiroom App

We recommend "iEAST Play" for iOS® or Android®

Download iEAST Play and follow the instructions (in the App) to connect your new speaker to your WiFi®



WiFi Security

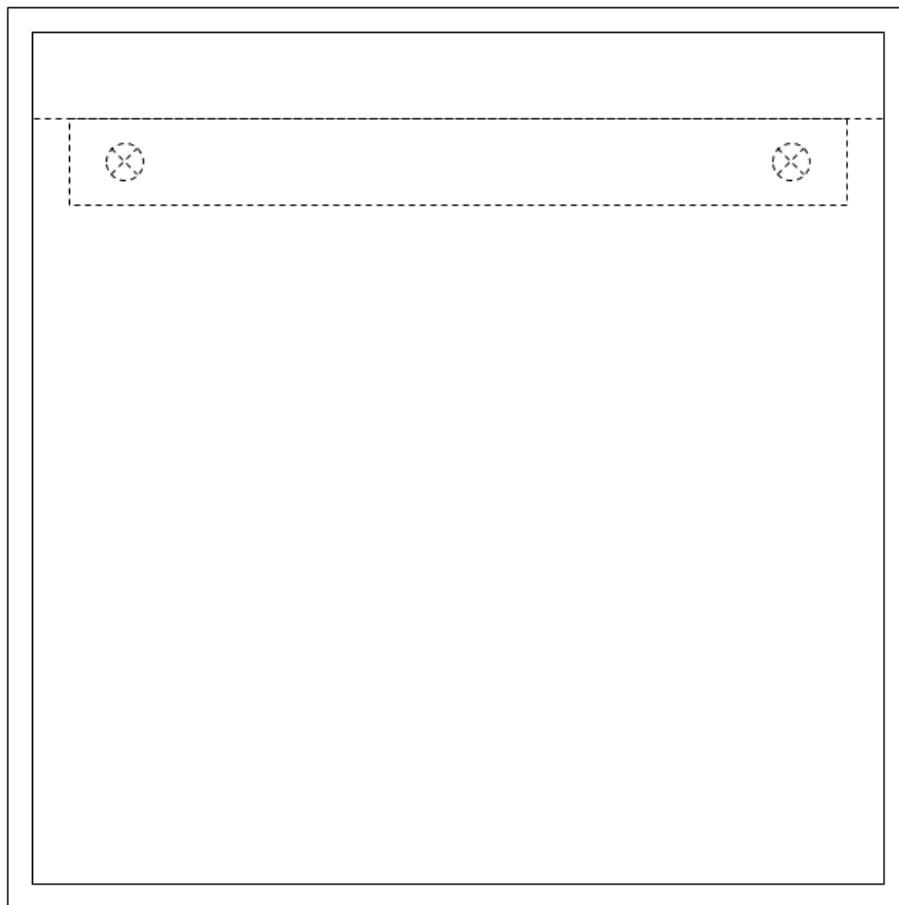


This is very important for your WiFi and Internet security!

If you can see your speaker(s) as a WiFi hotspot, you can hide this hotspot or add password in the App. You get access to the settings by pressing the gear icon next to the speaker in the device list, and press "speaker info"...

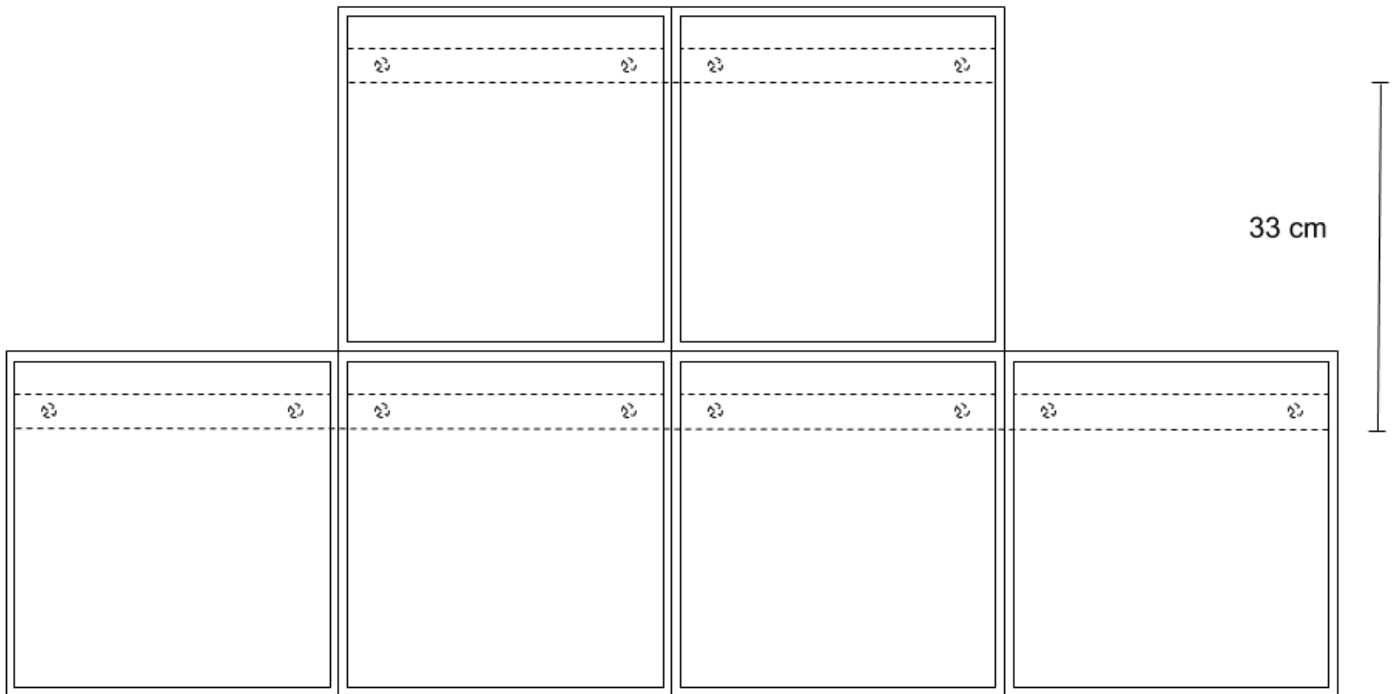
Mounting (single module)

- Step 1: Drill two holes in the wooden wall bracket to avoid that the wooden cracks or use our recommended aluminium rail (SQ33-R1)
- Step 2: Place the bracket/rail on wall and markup the holes through the bracket/rail (for correct wall location remember the distance from module top to bracket/rail bottom when markup the holes)
- Step 3: Mount the bracket/rail on wall with flat head screws
- Step 4: Hang the module on the bracket/rail



Mounting (modules in a group)

- Step 1: Use our aluminium rails (SQ33-R1/2/3/4/5/6) for the best result
- Step 2: Place the rail on wall and markup the holes through the rail
(for correct wall location remember the distance from module top to rail bottom when markup the holes)
- Step 3: Mount the rail on wall with flat head screws
(when mounting more than one rail above each other make a distance from rail bottom to rail bottom at 33 cm)
- Step 4: Hang the modules on the rail(s) starting from the lowest hanging rail



Ecofriendly

With respect of our environment, we create acoustics and audio products based on the newest technologies and a modern design. Our ecofriendly product line "Square" are build of Paulownia wood, which have extraordinary sustainable properties.



Paulownia is a fast-growing lightweight hardwood tree, with the capability of grow a new tree from the same root as the tree you just felled. The tree is grown in plantations, which protects the important rainforests from extinction. The roots go very deep and clean the underground, even after the tree has been felled. The leaves are enormous and absorb more CO2 than any other tree. The use of Paulownia will probably save the planet if all woodwork was made of this magic tree.